

We are open for Supporting Members and Donators!

Did you know that MIEF's programs and activities are partly paid for by donations and membership fees? It is the generous support of our supporters that allows us to do our work. There are two ways you can help us financially.

Because MIEF is a foundation, the membership fee is considered tax deductible. Example, if you pay ¥ 3,000 as a membership fee, $(3,000-2,000) \times 40\% = ¥400$ will be deducted. Please call our office for more information.

◆Become a supporting member

◇What is a supporting member?

Supporting members are those who agree with the aims of MIEF and support the activities.

◇Benefits

1. Subscription of "MIEF News", 3 times a year which provides information on activities and events.
2. The 10%OFF the purchase price of the Series of "Japanese Mieko" Japanese teaching materials and guidance materials
3. 50% discount for the seminars held by MIEF
4. Free rental of International flag (for meetings, entrance ceremony, athlete ceremony, etc.)
5. The ¥3,000 fee for the use of the interpretation and translation system will be 50% OFF*

*Contact our office for more information.

◇Annual Membership Fee

Group ¥12,000 per entry; Individual ¥3,000 per entry;
Partner ¥1,000

*Partners are people who help out with MIEF

◆We are open for donations (contribution).

Donations will be tax deductible if applied. We are looking forward for your support.



こうえきざいだんほうじん みえけんこくさいこうりゅうざいだん
公益財団法人 三重県国際交流財団

Mie International Exchange Foundation (MIEF)

Working Towards a
Multi-Cultural Society
in Mie



Mie International Exchange Foundation

〒514-0009 Mie, Tsu, Hadoroko-cho 700 UST-TSU 3F

TEL 059-223-5006 FAX 059-223-5007 E-mail mief@mief.or.jp URL <http://www.mief.or.jp>

facebook 公益財団法人三重県国際交流財団 (MIEF) twitter @MIEFsince1991

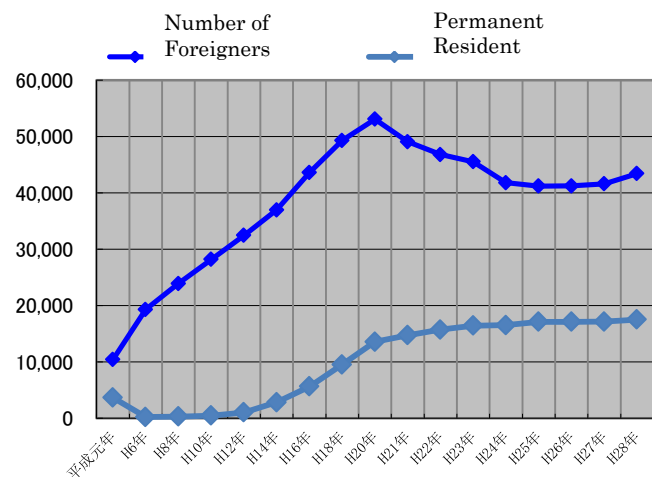


The Mie International Exchange Foundation (MIEF) was established as a public welfare organization in 1991 through the generous funding of local governments and private organizations. Year 2004, with the integration of Mie Prefecture Association of International Education, we support the education of children with relation to foreign nationality.

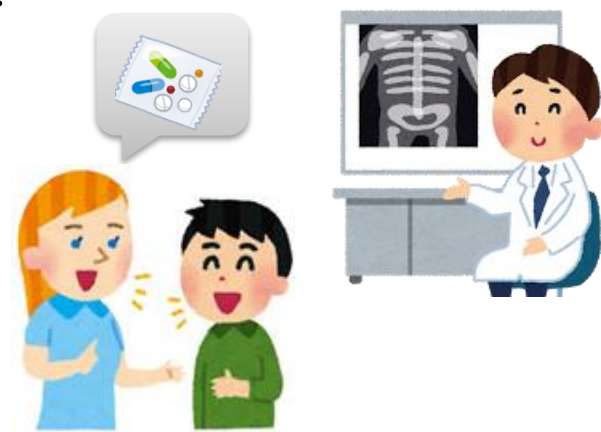
April, 2017

Foreign Residents in Mie

In 1990, following the amendment of the Immigration Act that allows up to third-generation of Japanese dependents to receive long-term residency status, leads to increasing numbers of Overseas Japanese (Nikkei) from Brazil and other country. As a result, the number of foreign workers has risen rapidly. The number reached its peak in 2008 by 53,082 and decrease its number on consecutive years yet began to increase slightly by 43,445 December, 2016 and registered 2.36% of the total population.



Furthermore, the number of foreigners who obtain “permanent resident” status has been increasing. Indicating foreigner’s settlement (employment, education and child care), into Japanese communities. But foreign residents here still face a variety of problems from different, **“Language”, “Culture”, “Policies”**



▲ 【Medical Interpreter Partner】

To help everyone in Mie live without worry....

We are striving to realize a multicultural society※

※Regardless of nationality, it is important to create a multicultural society in which differences in language, culture and customs are respected and recognized by everyone who lives in it.

【2. Promoting International Exchange】

We collect information on related NPO/NGO group which promotes international exchange. All lists are posted in MIEF website (total of 97 groups).

【3. Expansion of International Cooperation】

In response to the commission from Mie Prefecture, MIEF offers scholarships to local residents who are interested in studying overseas. We also act on behalf of the Mie Prefectural Government to invite Japanese teachers from overseas to come to Japan to increase their knowledge and further improve their skills.

【Foreign Students Scholarship】▶



Three Pillars of MIEF

【1. Promoting Multi-cultural Society】

★Livelihood support to foreign residents.

Multilingual Consultations (Portuguese, Spanish, Filipino, English) We provide administrative and daily-life information and connect to specialized agencies to support problems arising from differences in “Language” and “Policies”.

★Promote mutual understanding.

Partnership System We widely recruit “partners”, those who share the awareness of supporting foreign residents, both linguistically and mentally. Registration is divided into 4 areas:

- ① Medical Partners: Interpreters for medical institution
- ② Japanese language Partners: Support foreign residents to learn Japanese (in Year 2017, some part of the system is stopped.).
- ③ Translation/Interpretation Partners : Translation and interpretation service for various organization such as administrative agencies and schools
- ④ Disaster Support Partners : Provide multilingual information service upon disaster, etc.

★Support for students and educators.

With the aim of helping educators teach Japanese to non-Japanese students, we have created an original textbook series called 『**Mieko san no Nihongo**』 and we are distributing it for free to public schools around Mie. We also operate a multi-cultural education center called 「Mi-ku」 that contains teaching resources and books on Japanese language teaching.



▲ 『Mieko san no Nihongo』 Series